

# HALO INTEGRATED

## **USB Driver Installation for Windows Users** rev 2.0

Before Windows users can use the USB input on the Halo Integrated, the drivers must be installed. The following instructions will step you through the installation of the Halo Integrated's USB drivers.

The drivers and these instructions are only for Windows users. Mac users do not need to install any drivers. Mac users should only follow the short instruction on page 12 of the Owner's Manual.

*If you have any questions please call the Parasound tech department M-F 8am-4pm at 415-397-7100.*

**Windows 10 Users** – Additional steps may be necessary for windows 10 users. Please see the end of these instructions before proceeding to Step 1.

### **Step 1 - Download Files**

- Download the driver package (zip folder) from the Halo Integrated's web page under the Downloads tab. *If you are reading these instruction you most likely have already completed this step.*

### **Step 2 - Unzip Driver Files**

- Locate the zip folder you just downloaded. It is named "Halo Integrated USB Drivers for Windows.zip"
- Unzip the folder by right clicking on the folder and then selecting "Extract All..."
- Make a note of where the extracted files are being saved and then click "Extract"

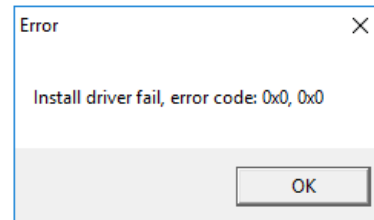
### **Step 3 - Run Driver Setup Application**

- Open the extracted folder named "Halo Integrated USB Drivers for Windows"
- Open the folder named "Driver Files and Setup Application"
- Run the setup application by double clicking "SETUP.EXE"

## **Step 4 - Follow the On-Screen Instructions**

- Windows will ask you to make changes to your computer, click “Yes”
- When the Setup Wizard starts, click “Install/Update” and then click “Next”
- Check the box “Parasound-Digital Audio” and then click “Next”
- When the window titled “Installing Component List” opens Click “Next”
- When the window titled “Installation Status” opens Click “Next”
- The Install Wizard will ask you to restart your computer. Click “Finish” to restart your computer or you may choose to restart your computer later if you need to save any open documents.

*Note: If you receive this error message (or something similar) then you must complete the Windows 10 setup procedure at the end of these instructions and then start again from step 3.*



## **Step 5 - Connect USB Cable (after restarting your computer in step 4)**

- Connect the Halo Integrated to a USB port on your computer (a USB cable is included in the box with your Halo Integrated).
- Power on the Halo Integrated
- Select the USB input by using the front panel Input Selector or by pressing the USB button on the remote control.

## **Step 6 - Complete ASIO Setup (after restarting your computer)**

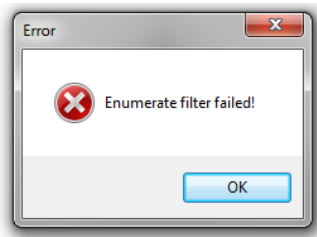
In order to playback some digital audio files (including DSD files) you need to complete one more series of steps:

- On your desktop should be a file called “PARASOUND -Digital Audio ASIO”. Double click this file. The file looks like this:



*If you get an error message see below*

- “DirectKS ASIO Full Duplex Setup” window will open
- Check the box “SPDIF Interface – (PARASOUND –Digital Audio)”
- Click the “Apply” button and then click the red “X” button in the top right to close the window. Driver setup is finished! Now follow step 7 to set the Halo Integrated as your computers default playback device.




If you see this error after double clicking “PARASOUND -Digital Audio ASIO” it means the Halo Integrated is not connected to your computer and powered on.

Verify these items and try step 6 again:

- Ensure you have connected the USB cable between the Halo Integrated and a USB port on your computer.
- Verify that the Halo Integrated is power on (the front panel input light and volume knob will be illuminated blue when it is power on).

## **Step 7 - Set your Computer’s Default Audio Output**

After installing the drivers (steps 1-6), check that the USB cable is connected to your PC and that the Halo Integrated is powered on. Next you will need to ensure that the Halo Integrated is selected as the computer’s default audio output device. Follow these instructions to assign the Halo Integrated as the default audio device:

1. Right click on the loudspeaker icon  in the bottom right of your screen (on the tool bar)
2. Select “Playback Devices”
3. When the “Sound” window pops up click on the “PARASOUND - Digital Audio” and then click “Set as Default”
4. Click “OK” to close the “Sound” window

**Note:** If for some reason you cannot find the loudspeaker icon you will need to select Sound Options in the Control Panel and then select “PARASOUND - Digital Audio” as your default playback device.

## **USB SETUP IS FINISHED!**

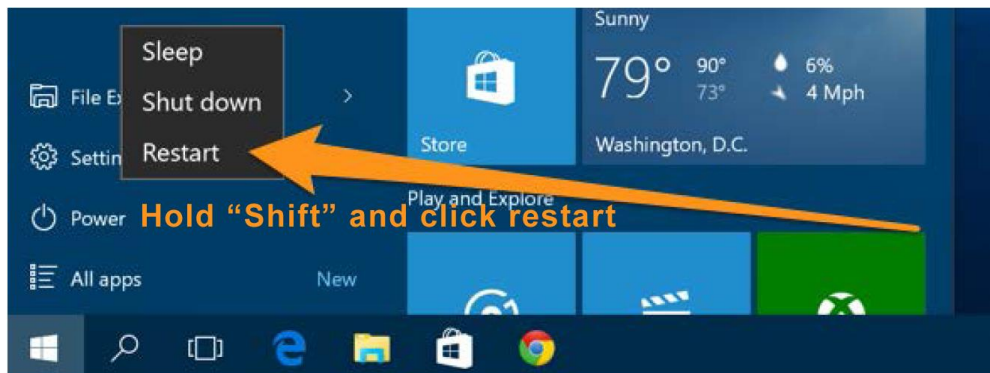
Your Halo Integrated is now ready for use with your PC! Press the USB button on the Halo Integrated’s remote control or rotate the Halo Integrated’s Input select knob until the blue USB indicator is illuminated. Simply start playing any music on your computer and it will be sent to the Halo Integrated via the USB cable. Any sound that you would normally hear through your computer speakers will be heard through the Halo Integrated and your accompanying audio system. ENJOY!

# Windows 10 Setup Procedure

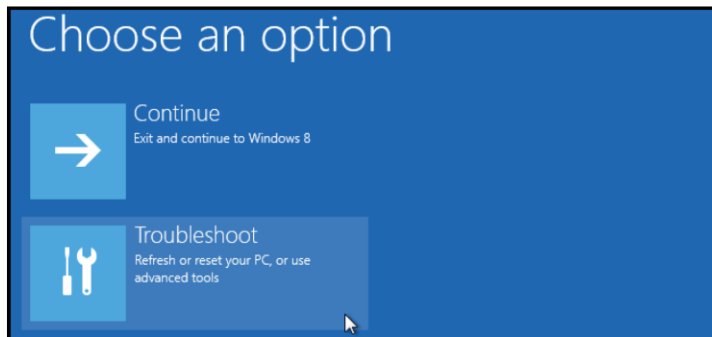
With Windows 10 Microsoft has changed the default settings for the enforcement of 3<sup>rd</sup> party drivers. If you receive an error message when trying to install the Halo Integrated drivers then you will need to change these enforcement settings. These default settings have caused headaches for thousands of devices and companies. Search for “Windows 10 Driver Signature Enforcement” in YouTube if you prefer a generic video on the process.

The procedure involves disabling “driver signature verification” in the advanced startup options.

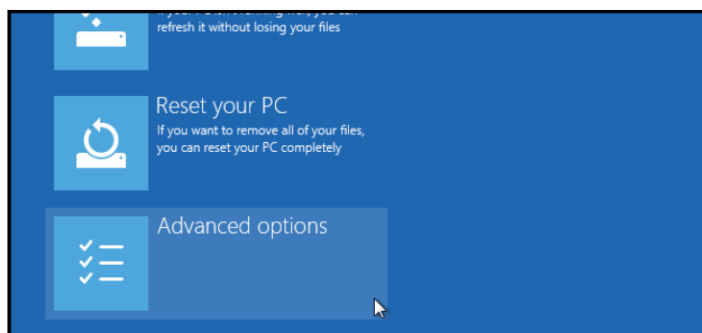
Start by locating “Restart” in the Start menu. Now hold down the SHIFT key while you click Restart.



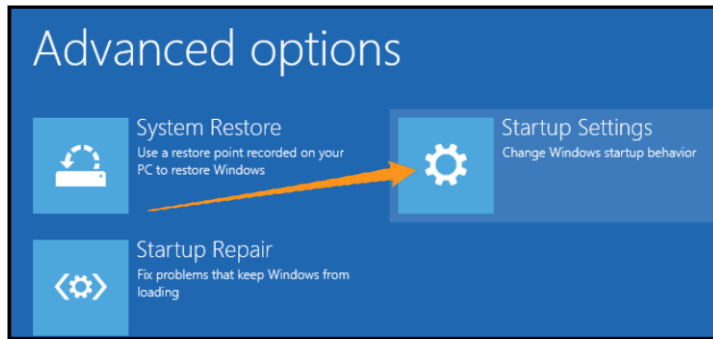
Once your computer has rebooted select the “Troubleshoot” option.



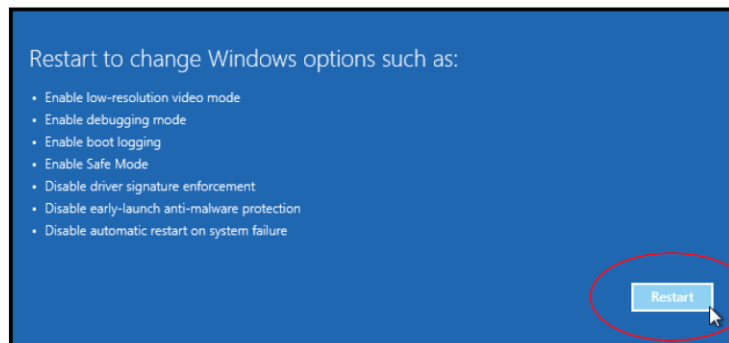
Next select “Advanced options”.



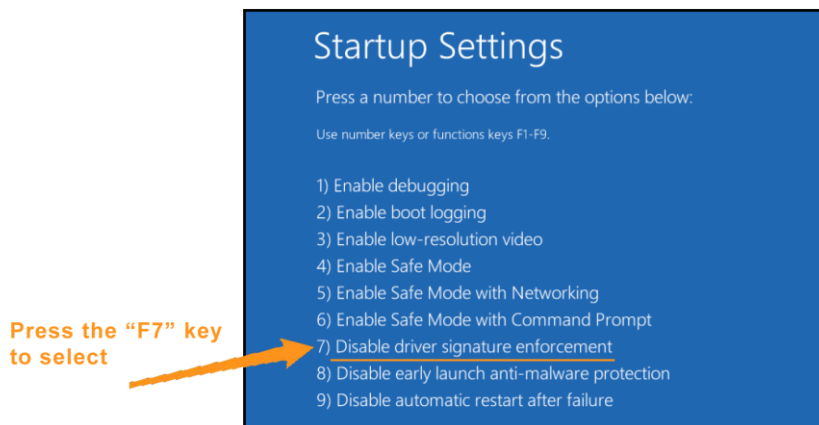
Then select “Startup Settings”.



Since we are modifying the startup preferences you will need to restart your Computer again. Click the “Restart” button in the bottom right corner to do this.



Finally, you will be given a list of startup settings that you can change. The one we are looking for is “Disable driver signature enforcement”. To choose the setting, you will need to press the F7 key since your mouse will be disabled.



That’s all there is to it. Your PC will automatically reboot and then you will be able to install the drivers without any error message. Proceed to Step 1 at the beginning of these instructions to complete the driver installation.