



Software Installation Instructions

Model numbers: **Halo C 1 and C 2**
Title: **PLIIx-Lipsync Software Upgrade**
Version: **6.86**
Release date: **August 1, 2005**

● Upgrade Contents:

- Dolby Pro Logic IIx Movie
- Dolby Pro Logic IIx Music
- THX Games mode
- 7.1 Channel Stereo Party Mode
- Lip Sync Adjustment
- Improved Bass Management
- High Resolution Bass and Treble Controls
- Choice of Tone Control Turnover Frequencies
- Discrete IR Codes for Second Zone

● Download and Installation Instructions:

These step-by-step instructions will show you how to download and install Parasound software version 6.86 from the Parasound website. Please heed all our warnings to protect your equipment from damage

In order to update the software in your C 1 or C 2 Surround Controller (hereafter simply called "Controller"), you will need all of the following:

- PC running Windows 95 or higher. Macs are not supported at this time.
- High-speed DSL or T1 internet connection.
- A file extraction program, such as Winzip or PKzip, to unzip downloaded files and extract files.
- DB9 to DB9 cable, male to female, straight-through serial cable (non-null modem).
- If your PC is only equipped with a USB port, you'll also need a USB to RS-232 adapter/cable.

Note: Not all USB to RS-232 adapter/cables will work. Some models have incompatible mounting hardware and cannot attach to the C 1 or C 2 RS-232 port. Some models cannot pass data at the minimum 230Kbps rate that is required to avoid damaging the C 1 or C 2. Repairs to units damaged for this reason are not covered under the Parasound Limited Warranty. Please don't use your present USB to RS-232 adapter/cable unless its maker confirms that it supports this data rate.

We know the Radio Shack 26-183 and Coolgear USBG-232-MM are suitable.

Caution: We have not found any Belkin model that will attach or work correctly.

Connect the DB9 cable between your PC and the Controller's RS232 connector.

Note: Your PC and Controller must both be turned off before connecting this cable. You must switch off power with the AC Power switch on the rear panel of the C 1 or C 2.

● Software Installation Instructions (continued)



Upload and Download Warning:

While you are uploading or downloading:

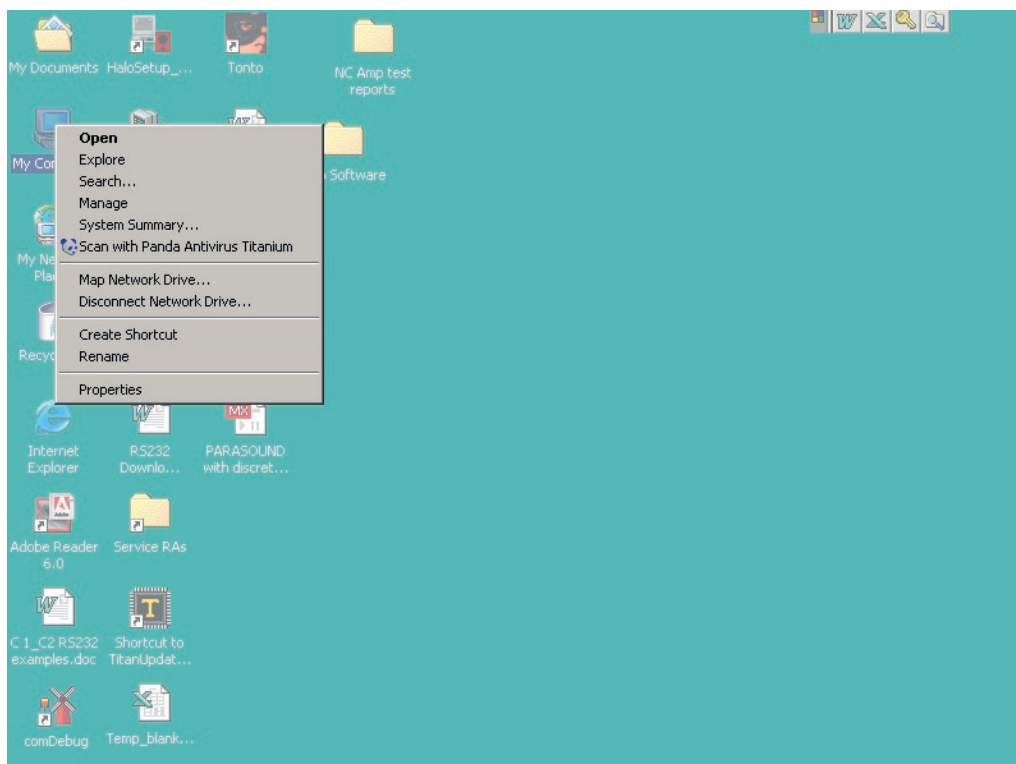
- Close all other applications.
- Do not disconnect the DB9 serial cable.
- Do not turn off either the PC or the Controller.
- Do not interrupt AC power to the PC or the Controller.
- Do not close program before completed.

Note: Any of these can permanently damage the Controller's EPROM chip. This will require the Controller be returned to Parasound for repair. *This repair is not covered by the Parasound warranty.*

PC Com Port settings:

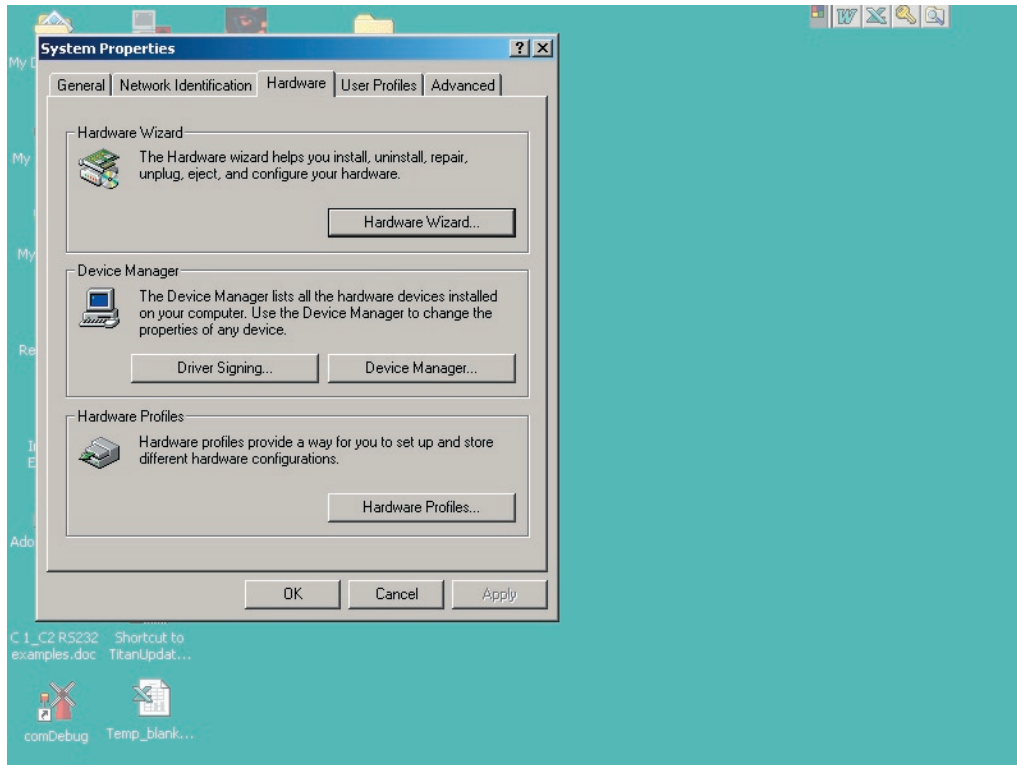
Bits per second:	9600
Data bits:	8
Parity:	None
Stop bits:	1
Flow Control:	None

Note: The previously mentioned port settings are the default settings for most PCs. To find your PC's com port settings, right click on the My Computer icon, select properties, click on hardware tab, then click Device Manager button. You can also find the Device Manager by going to the control panel and clicking on the System Icon. *See screen examples 1A – 1E:*

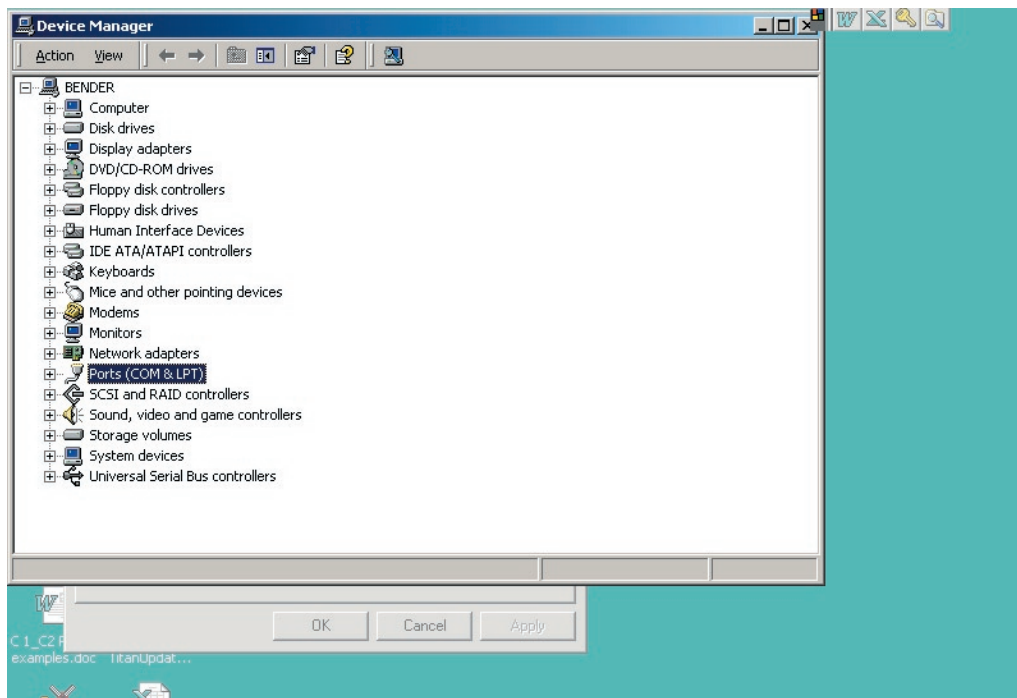


Screen example 1

● Software Installation Instructions (continued)

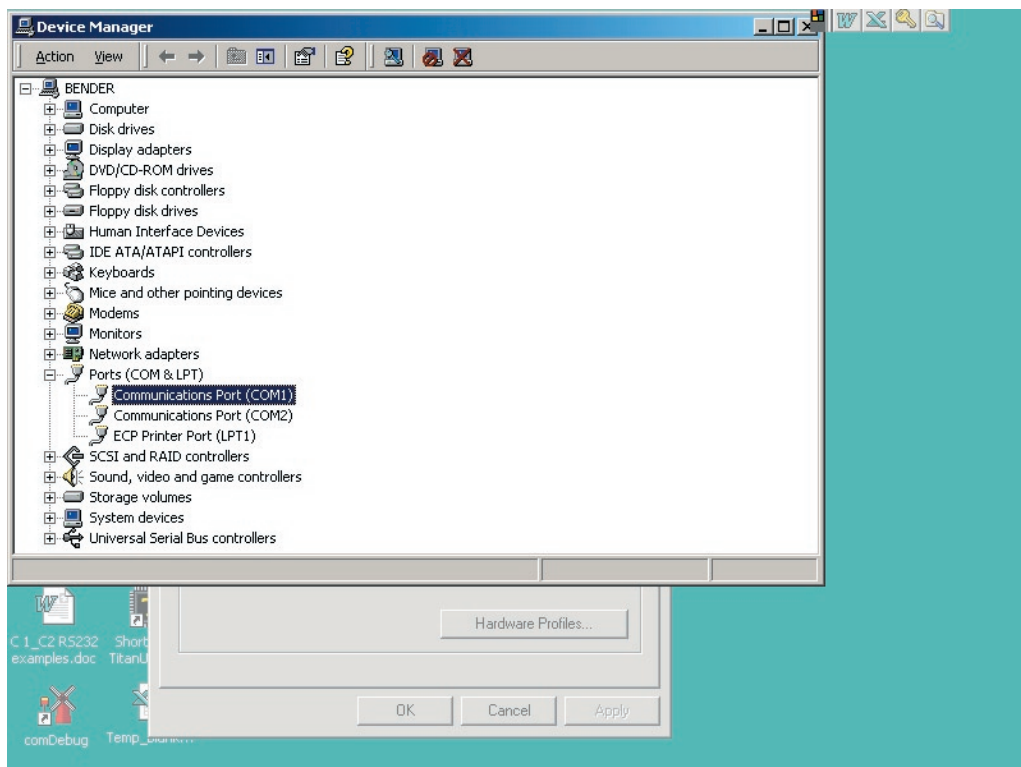


Screen example 1B

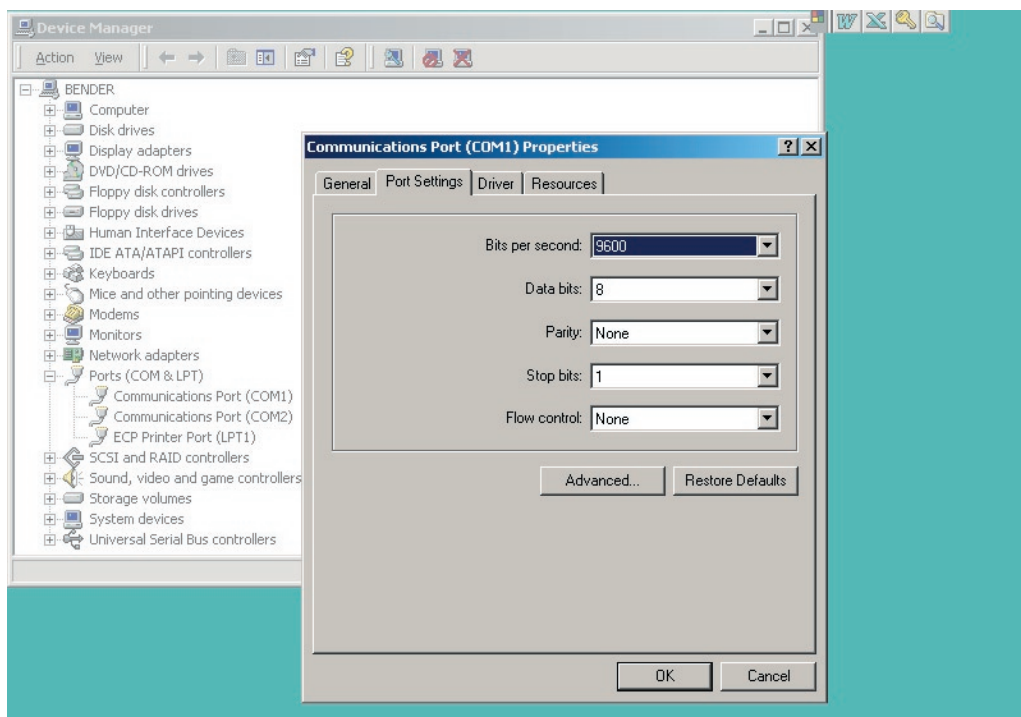


Screen example 1C

● Software Installation Instructions (continued)



Screen example 1D



Screen example 1E



● Part 1 of Update: Backup Your Settings

Settings include the selections you made in the setup menu, the calibrated speaker levels and the calibrated distances.

Note: If you don't save these settings before installing the PLIIx-Lipsync Software Upgrade, you'll have to go through your Controller's full setup and calibration procedures, the same as you'd have to do with a brand-new unit.

- 1a. Connect the DB9 cable between your PC and your Controller after turning the power off for both units. This means that the AC power switch on the Controller is switched off.
- 1b. Restore power to your PC and your Controller only after the DB9 cable is securely connected at both ends. This means that the AC power switch on the Controller is switched on.
2. Before downloading files be sure to backup all of your settings, using the Halo Setup software!
3. Halo Setup software files can be found at:

for the C 1: <http://www.parasound.com/halonew/C1downloads.asp>

for the C 2: <http://www.parasound.com/halonew/C2downloads.asp>

4. You will need to create a folder and unzip/extract all 3 of these files:

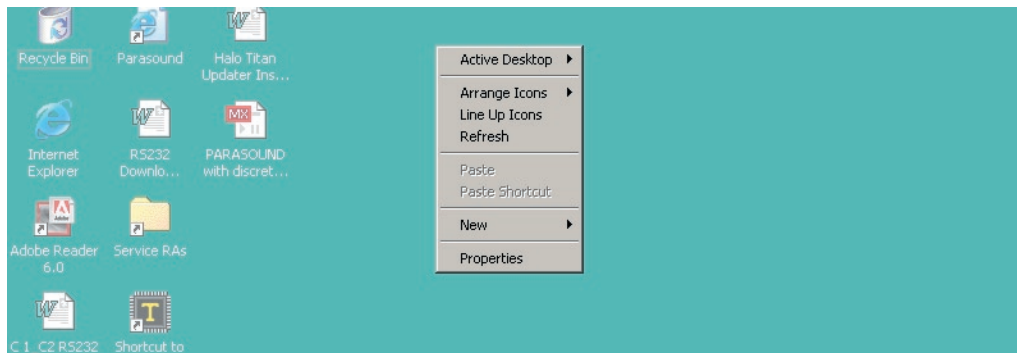
Default.dfg

HaloSetup_v11.exe

Startup.bmp

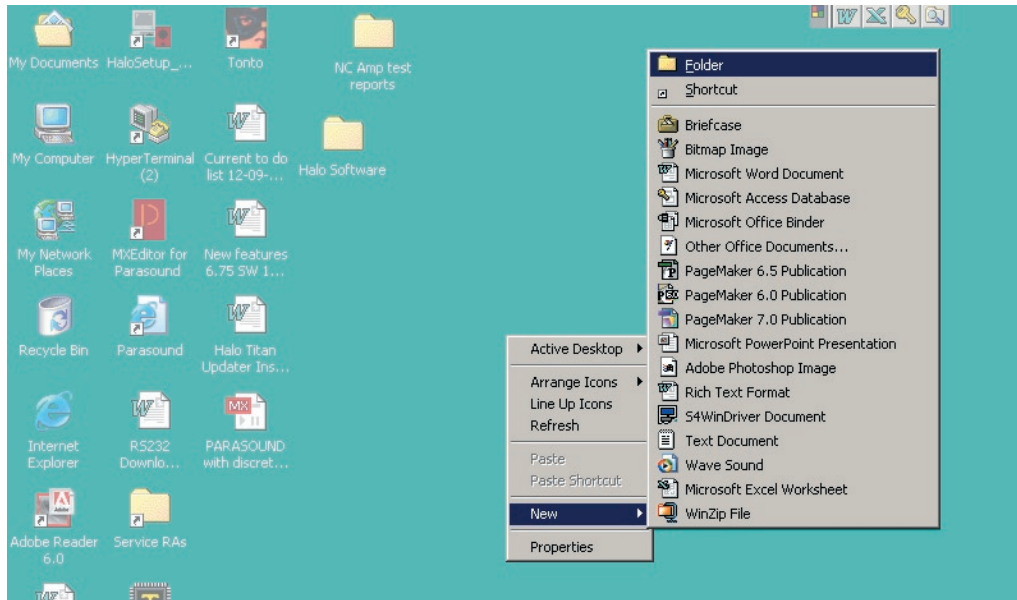
Note: All three files must be put into same folder.

5. To create a new folder right click your mouse on the desktop, highlight New on the drop-down menu, click on Folder. *See screen examples 2A and 2B:*



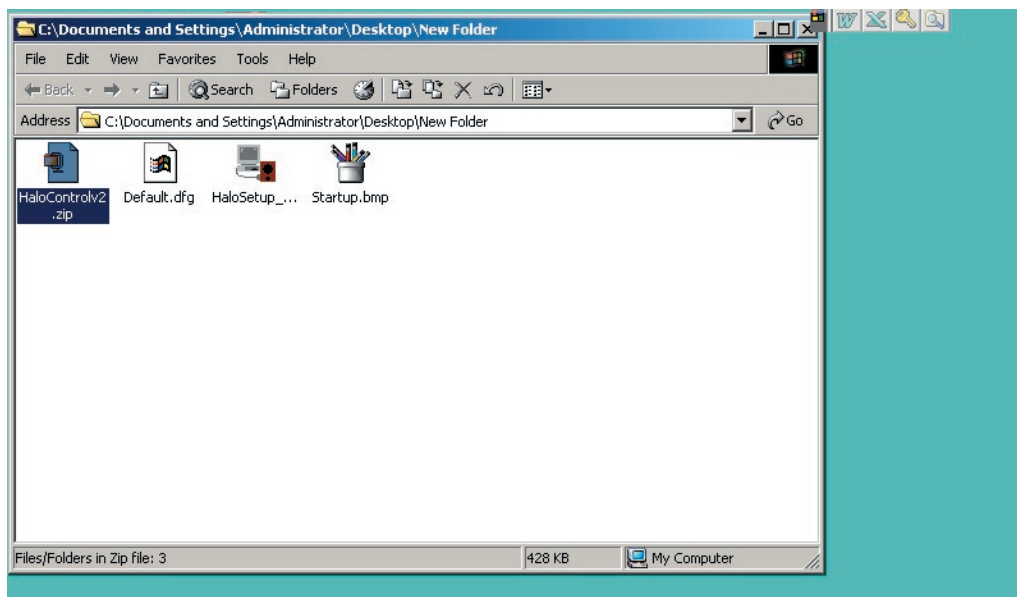
Screen example 2A

● Part 1 of Update: Backup Your Settings (continued)



Screen example 2B

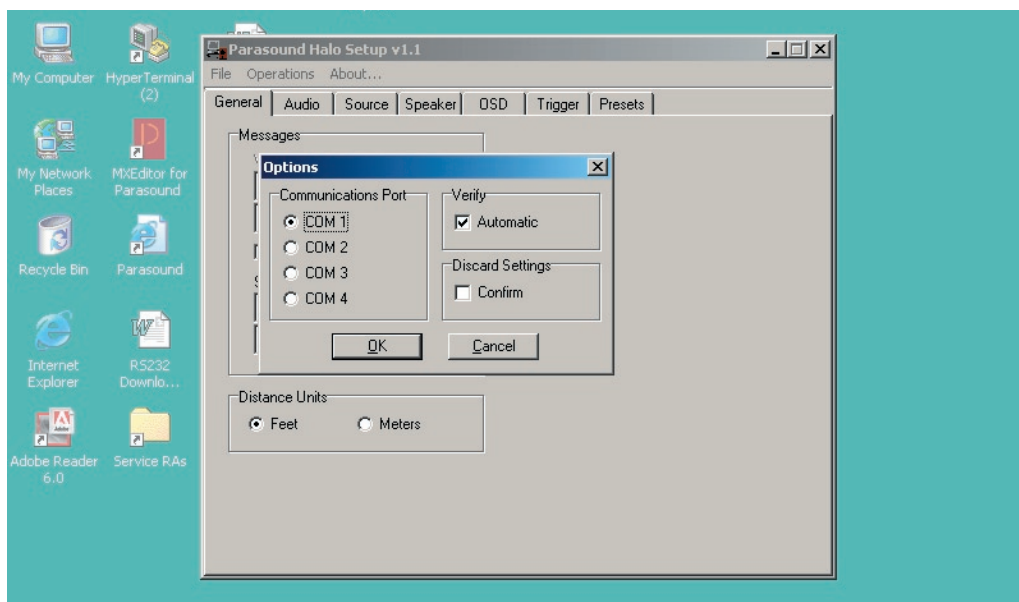
6. Extract the files using a program such as Winzip or PKzip..
7. Double click on the “HaloSetup_v1.1.exe” icon to run the Setup program.
See screen example 3:



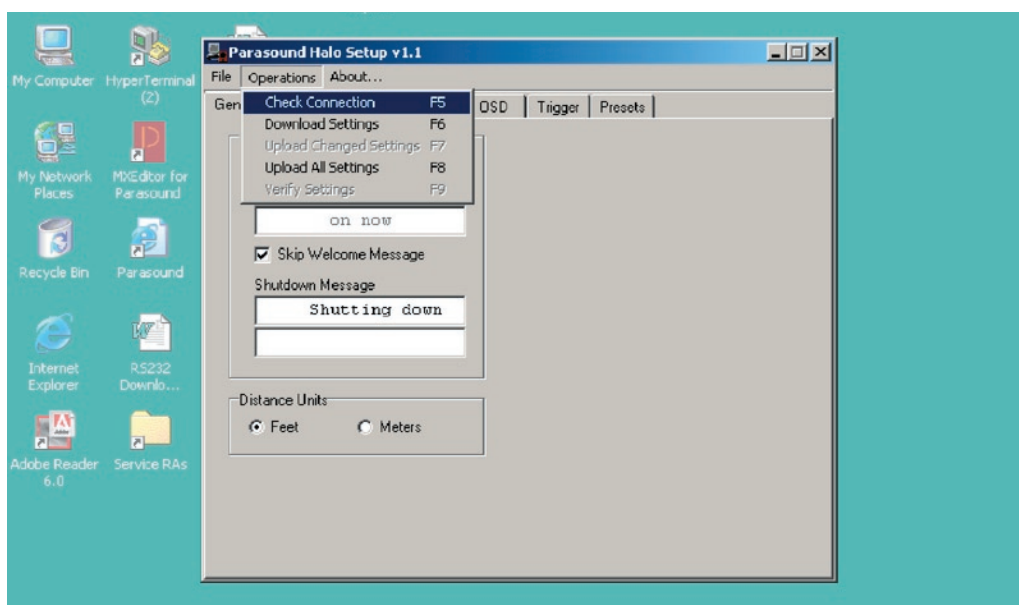
Screen example 3

● Part 1 of Update: Backup Your Settings (continued)

8. Select "Options" on the file drop-down menu and select your com port. The default setting for the com port is com 1, verify automatic. To determine whether the com port is configured, select Check Connection on the Operations drop-down menu. See screen examples 4A – 4C:

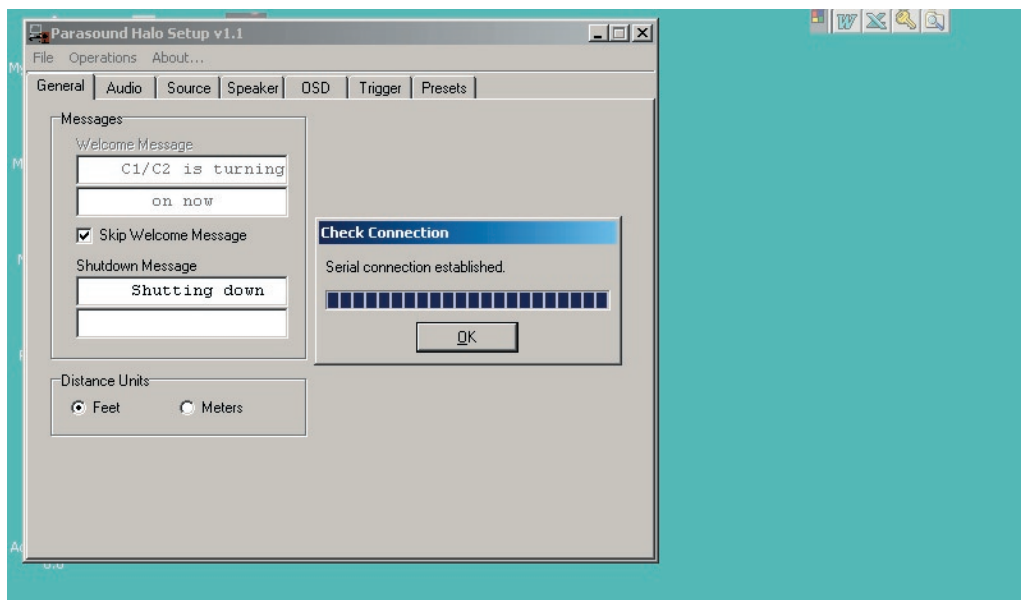


Screen example 4A



Screen example 4B

● Part 1 of Update: Backup Your Settings (continued)

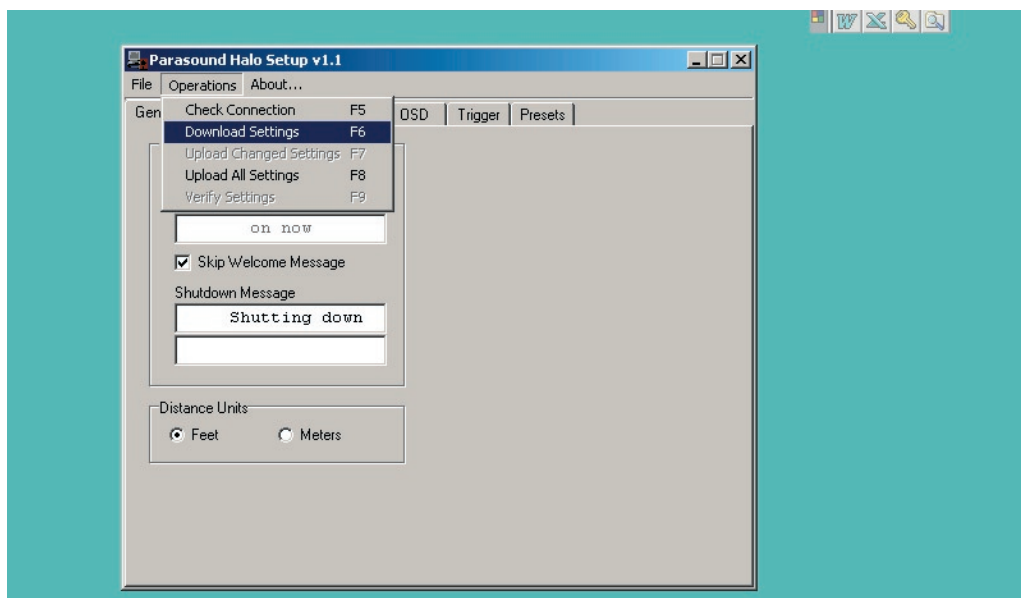


Screen example 4C

9. Turn on the AC power to your Controller, if you haven't already done this in Step 1b. Copy your settings from your Controller to your PC by selecting "Download Settings" from the Operations drop-down menu – see screen shot.

Note: The Controller can remain in its standby mode, just so long as its AC Power switch is turned on.

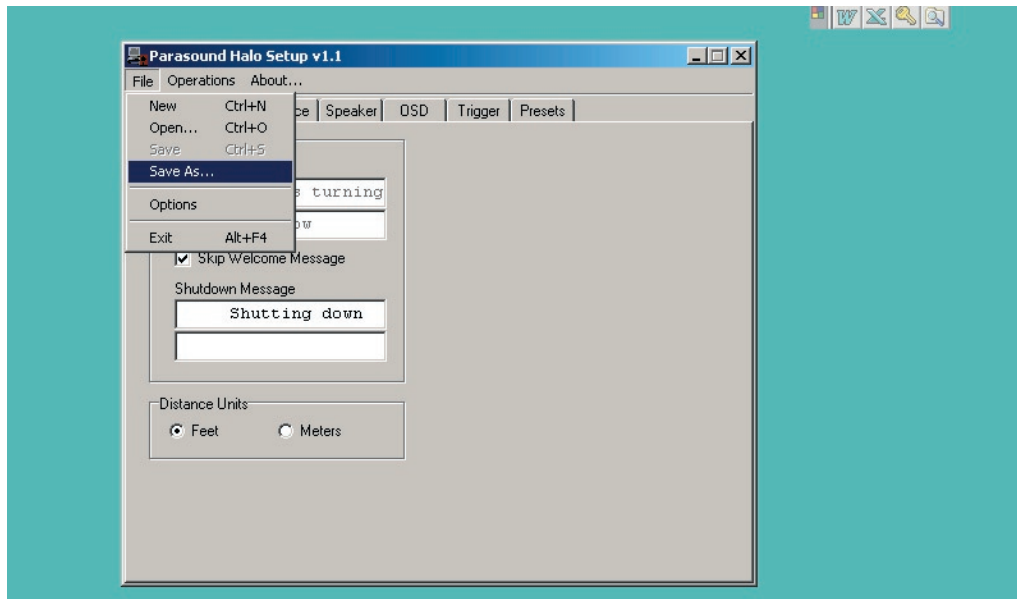
See screen example 5:



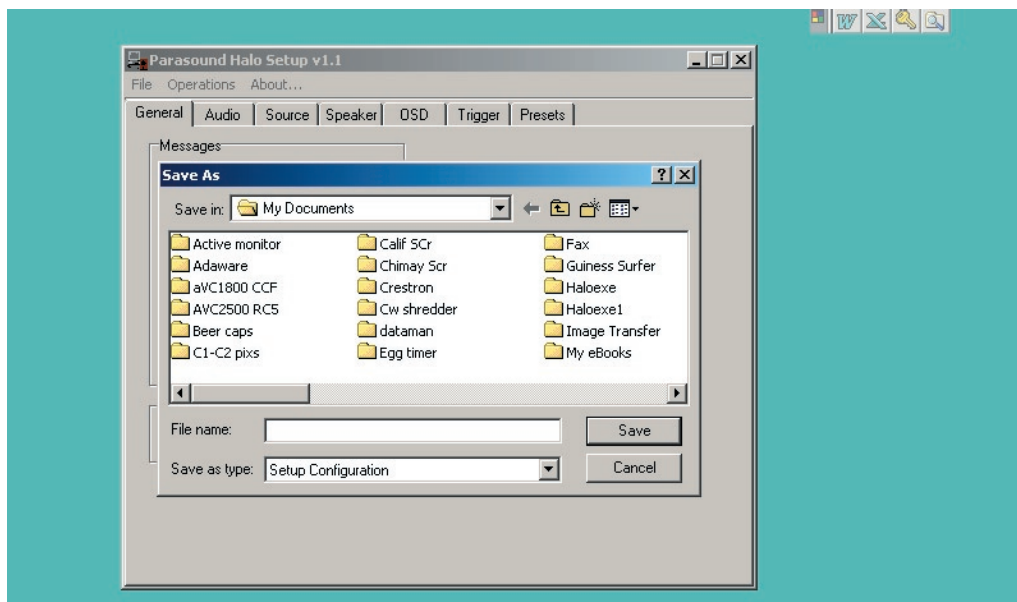
Screen example 5

● Part 1 of Update: Backup Your Settings (continued)

10. Before exiting Halo Setup software be sure to click on the file drop-down menu and click on the Save As button to save your setup so you can upload it to your Controller later.
See screen examples 6A and 6B:



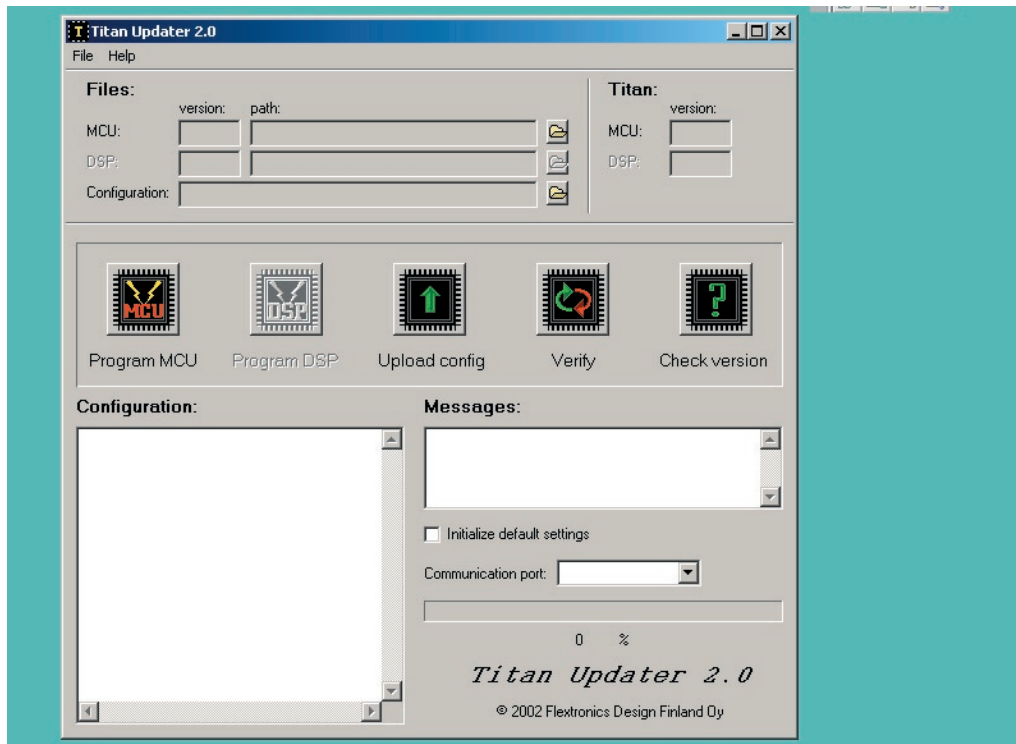
Screen example 6



Screen example 6B

● Part 2 of Update: Installation of the Software Update

1. After downloading program and update files, create a folder on your PC's desktop as the destination for the extracted files. All files should be located in the same folder.
2. You will need a program like Winzip or PKzip to unzip (extract) the downloaded files.
3. Run the updater program called **"TitanUpdater20.exe"**. See *screen example 7*:



Screen example 7

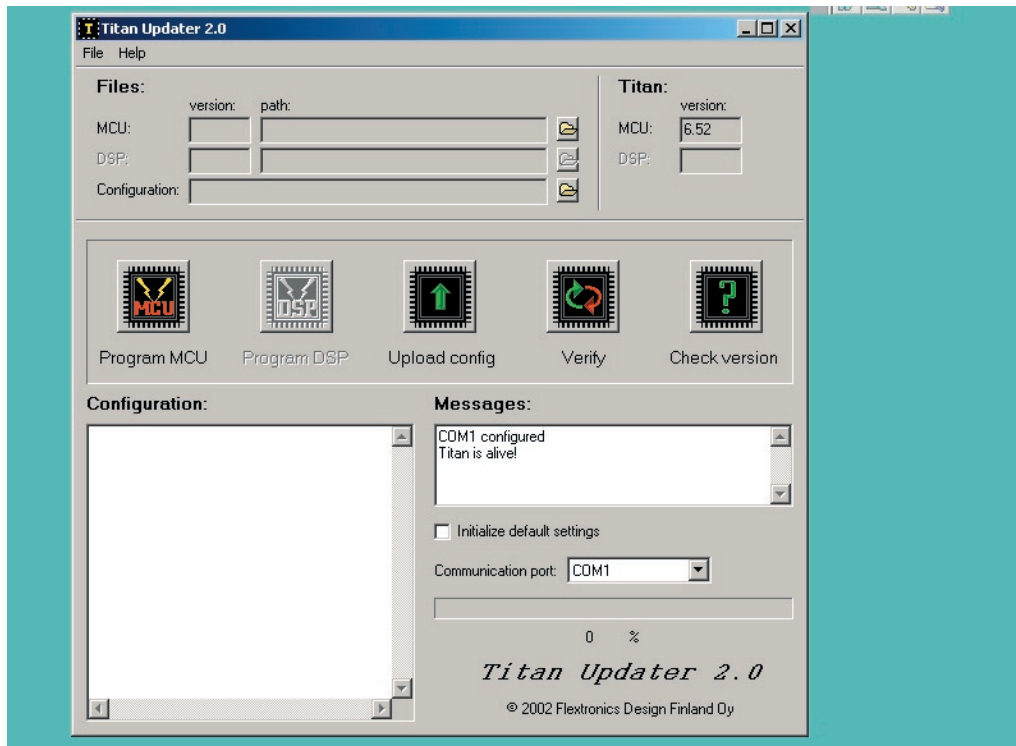
● Part 2 of Update: Installation of the Software Update (continued)

4. Configure the com port by selecting the correct com port.
"Titan is alive!" should be displayed in Messages window.

Note: If the Titan updater does not respond try:

- Rebooting your PC.
- Turning the Controller's rear panel Power switch off, then back on.

5. Click on the program MCU button. See *screen example 8*:

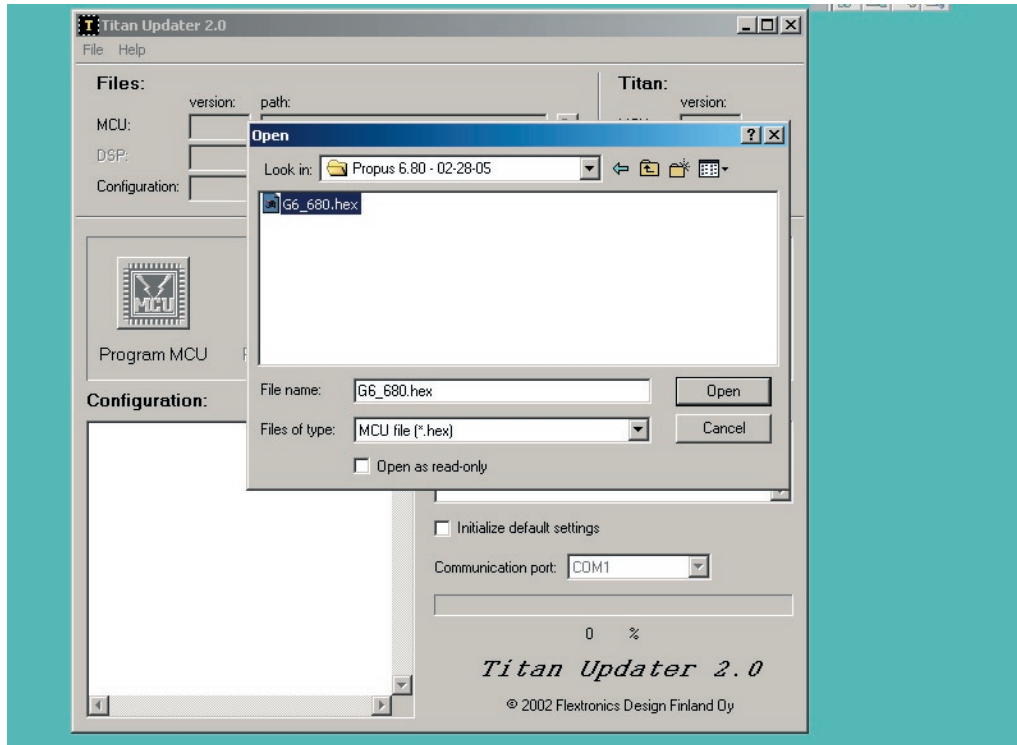


Screen example 8

● Part 2 of Update: Installation of the Software Update (continued)

6. Point it to the Hex file “**G6_686.hex**” in the folder that you created in Step 1, and click “Open.”

See screen example 9:

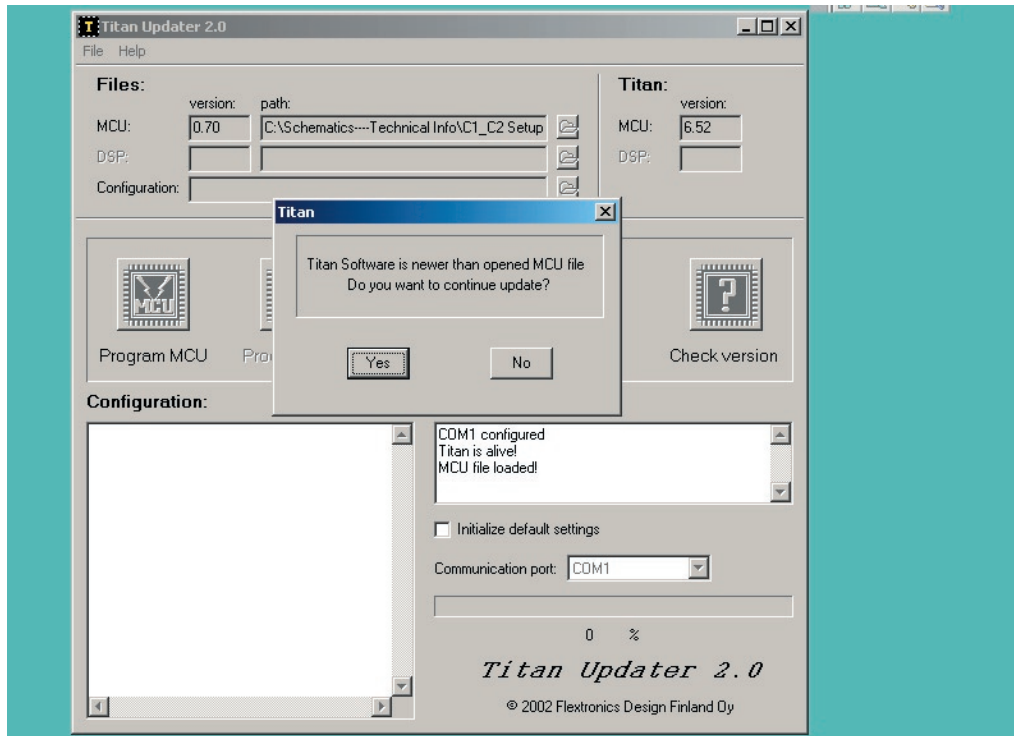


Screen example 9

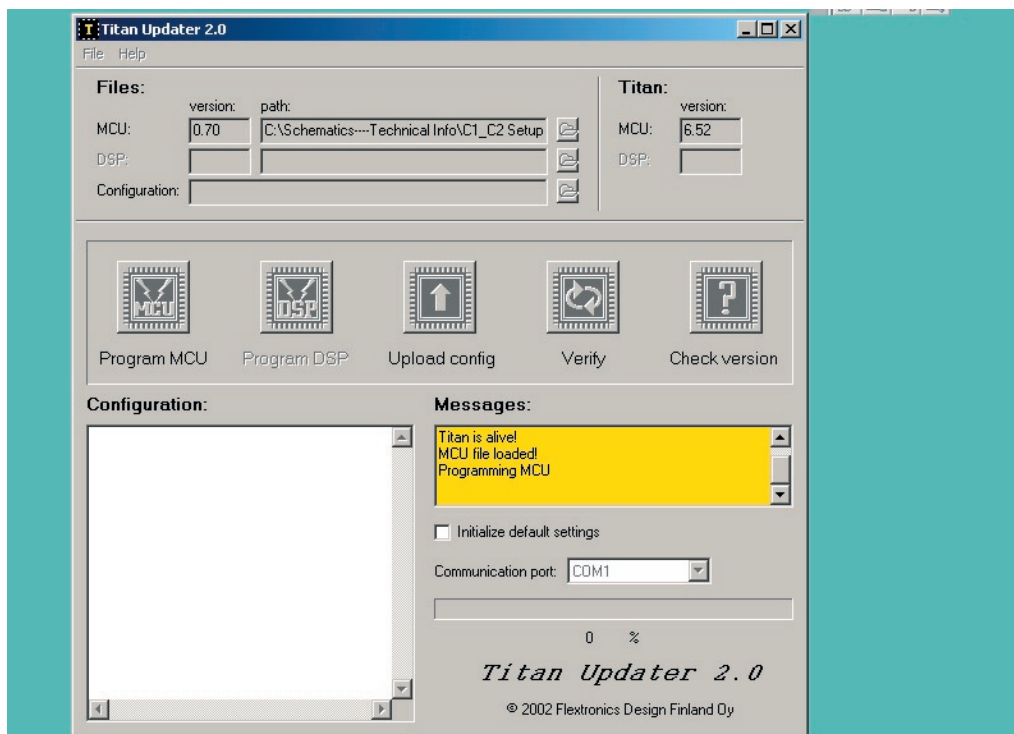
- When the screen below appears, click on the YES button to continue the update.
- The entire process takes approximately 30 minutes to complete.

See screen examples 10A and 10B:

● **Part 2 of Update: Installation of the Software Update** (continued)



Screen example 10A



Screen example 10B

● Part 2 of Update: Installation of the Software Update (continued)



Caution:

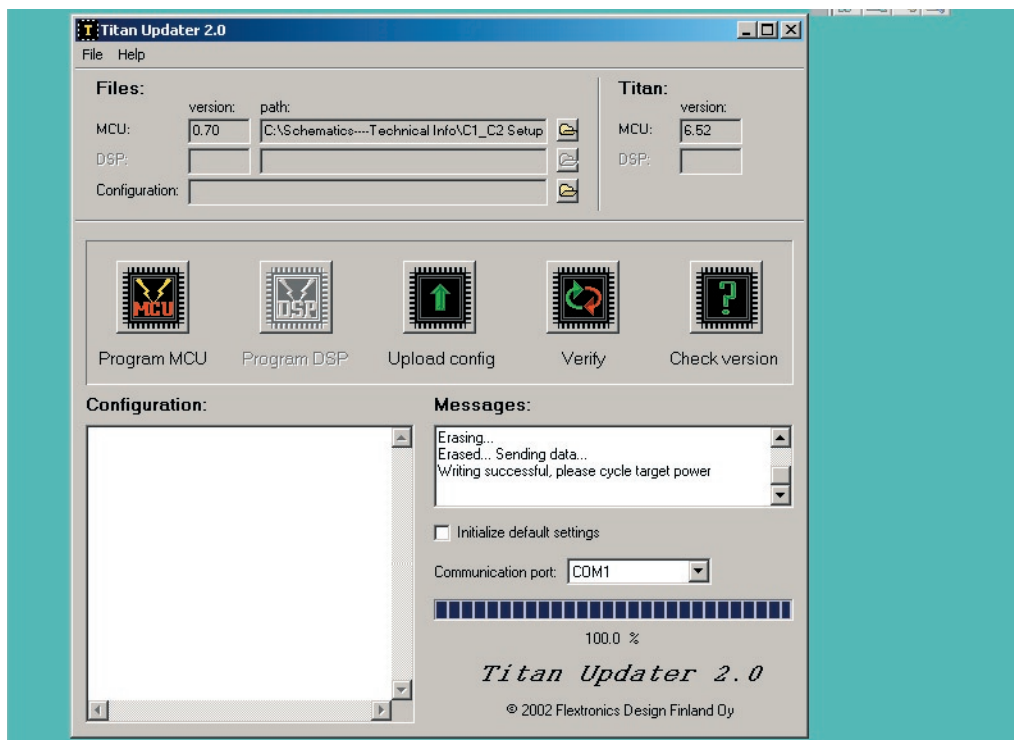
If the update program stops for any reason before “100%” is displayed, **DO NOT TURN OFF THE PC OR THE CONTROLLER.**

Instead, click on the MCU button again to resume programming.

We recommend not running any other programs during update procedure.

7. When the update is complete your screen will look like screen example 11. At this time, be sure to cycle the Power switch on the Controller’s rear panel off and then back on. The update will not take effect unless you do this.

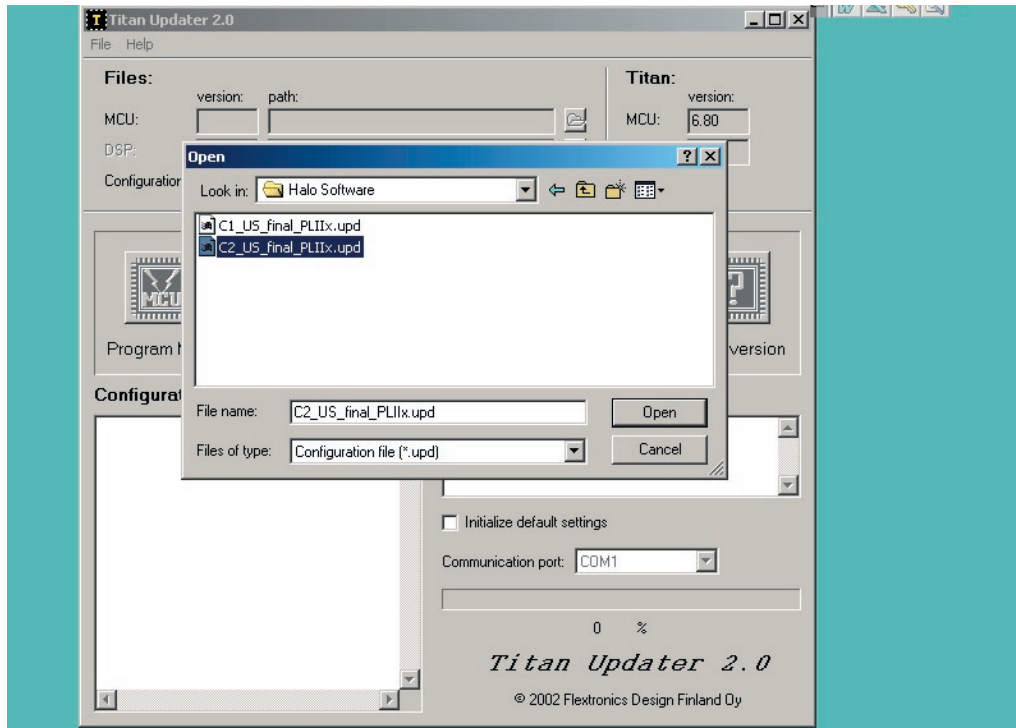
See screen example 11:



Screen example 11

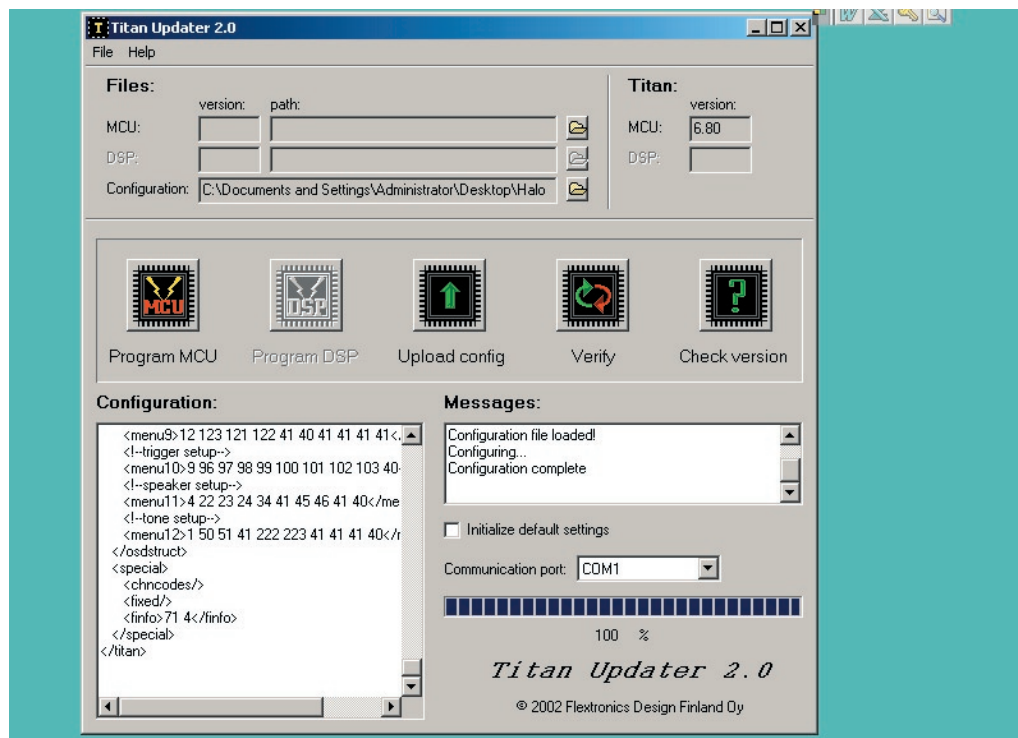
● Part 2 of Update: Installation of the Software Update (continued)

8. Wait for controller to power back up. Now click on the Upload config button.
 9. Point it to C 1 or C 2 final.upd file (depending on your model): this will take approximately 60 seconds.
- See screen examples 12A and 12B:*



Screen example 12A

● Part 2 of Update: Installation of the Software Update (continued)



Screen example 12B

11. Be sure to cycle the Power switch on the Controller's rear panel off, then back on one more time.
12. The update is now complete.
13. To verify the update, simply place the Controller in standby by pressing its front panel On-Off button or the remote handset's OFF button. Now press the front panel On-Off button and hold it in for a few seconds. If you were successful, the panel display will indicate version "6.86."
14. Restore your original settings using the Halo Control Software. Open the file you previously saved in part 1 and load its settings into the Controller by using the "Upload all settings" command on the Operations pull-down menu. After the settings are reloaded, you'll have to cycle the rear panel AC power switch off and on one last time.

Please refer to the **C 1, C 2 Manual Supplement** (included in this download) which shows how to setup and use the upgraded features.